



Marine Industry Solutions

Resimac Limited, Unit 11, Poplars Industrial Estate, Wetherby Road, Boroughbridge, YO51 9HS, North Yorkshire, United Kingdom

Tel: +44 (0) 1423 325073

Web: www.resimacsolutions.com

Email: info@resimac.co.uk

Introduction to Resimac

Resimac has been involved in the Marine Industry since it was formed in 2009. Our engineering repair materials and coatings have been used by ship owners, yards and engineers worldwide.

Our products are proven to repair, protect and upgrade metallic surfaces subject to the following -

Wear

Abrasion

Impact

Chemical Attack

UV Degradation & Weathering

Resimac epoxy and polyurethane engineering repair materials and coatings can be used to repair a diverse range of equipment, components and assets including -

Pumps

Valves

Pipework

Filters

Storage tanks

Process Vessels

Heat Exchangers

Rudders

Bow Thrusters

A-Frames/ P-Brackets

With over 50 contractors worldwide we are able to offer fast and effective solutions in many of the worlds busiest ports while maintaining local relationships with many of the major shipyards and ship operators. By using Resimac products you can be assured of receiving high quality products with a proven track record in the marine industry.

Pump Repair and Refurbishment



Resimac epoxy based pump repair coatings and repair materials contain hardened ceramic particles to give a superior abrasion resistant finish to worn and corroded surfaces.

Our ceramic enhanced pump repair products have been specifically designed to deal with the harsh operating environment found in pumps and pumping systems.

Solvent free

Seamless finish

100% solids epoxy

Hardened ceramic finish

Superior abrasion and wear resistance

High chemical resistance

Upgrade worn and inefficient systems

Products include—

201 Ceramic Repair Paste—2 component solvent free epoxy paste

202 Ceramic Repair Fluid— 2 component solvent free epoxy brushable fluid for extreme wear and abrasion

203 Super Flow— 2 component solvent free epoxy brushable fluid with a high gloss finish for improved flow efficiency

Pipe Repair & Pipe Encapsulation

Resimac epoxy based composite repair systems have been used to repair and encapsulate 1000's of metres of onboard pipework.

Our composite repair systems are based on a unique epoxy gel which can be applied to manually prepared surfaces. The epoxy gel can then be wrapped using a wide range of technical fabrics to give a high strength repair to pipes with a diameter of 1" to 36".

Solvent Free

Epoxy based resin system

Encapsulate 1" to 36" diameter pipework

150°C (300°F) temperature resistance

Can be applied to manually prepared surfaces

Up to 300psi pressure tolerance

Easy to mix and apply

Products include—

301 Epoxy Resin— 2 component solvent free epoxy gel for manually prepared surfaces

302 Epoxy Repair Cement— 2 component solvent free trowel grade epoxy repair paste for manually prepared surfaces



Sea Water Filters

Sea Water Filters are prone to severe erosion and corrosion issues due to their aggressive operating environment. Cast iron or steel surfaces can become badly pitted and corroded and require rebuilding and protecting from any further surface degradation. By using Resimac ceramic enhanced repair materials the filter can be rebuilt and resurfaced to bring it back to its original factory finish.

Resimac ceramic enhanced coatings are ideal for this type of application have been used by ship owners around the world to give long lasting protection to key assets and equipment.

Hardened ceramic finish to give superior erosion resistance

Solvent Free epoxy repair materials

Ideal for protecting metallic surfaces

Applied by brush or trowel

Easy to Mix and Apply



Products include—

201 Ceramic Repair Paste—2 component solvent free epoxy paste

202 Ceramic Repair Fluid— 2 component solvent free epoxy brushable fluid for extreme wear and abrasion



Waste Water and Drinking Water Tanks



Products include—

507 DWPU— 2 component solvent free polyurethane coating with UK approval for drinking water applications

106 Metal Repair Paste XF— 2 component fast curing solvent epoxy repair paste for emergency repairs to leaking tank surfaces

Our polyurethane coatings are ideal for lining steel tanks used to retain effluent, waste water and drinking water.

Resimac materials can be used for emergency repairs or to reline all surfaces of the tank. The flexibility of our product range is such that our coatings can be applied to surfaces that have been prepared using hand held mechanical grinders or that have been abrasive blast cleaned.

Once cured the coatings will give a flexible, hard wearing finish to any metallic surface ensuring long lasting protection from erosion and corrosion.

Flexible

Seamless

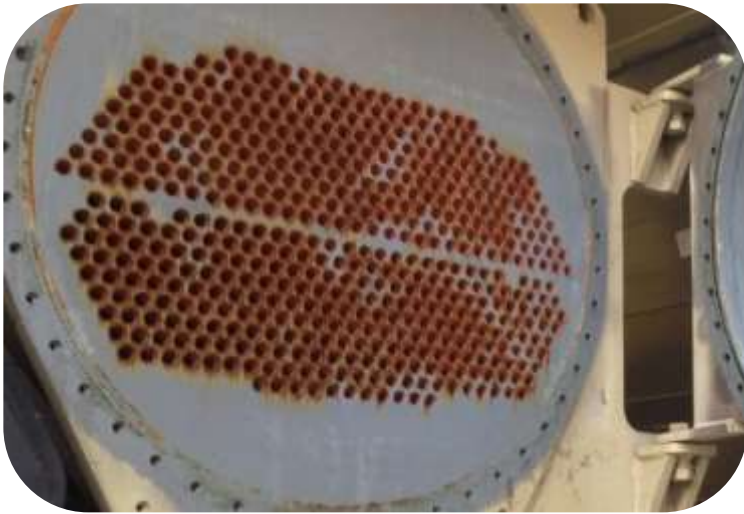
Solvent free

Polyurethane based resin system

Approved for potable water contact

Excellent impact resistance

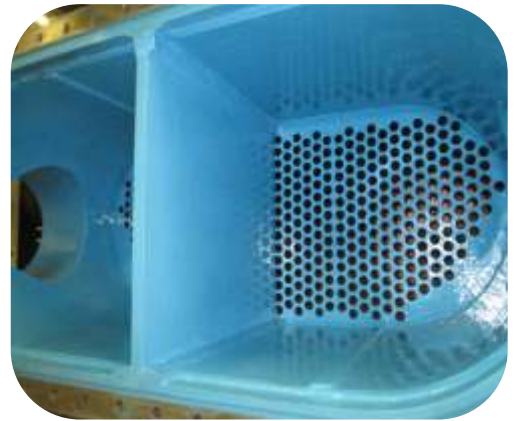
Heat Exchangers



Products include—

101 Metal Repair Paste—2 component solvent free epoxy paste for rebuilding damaged and worn surfaces

202 Ceramic Repair Fluid— 2 component solvent free epoxy brushable fluid for extreme wear and abrasion



Heat exchangers are prone to bimetallic corrosion on tube sheets, end covers and water boxes.

Resimac ceramic enhanced repair materials and coatings can be used to rebuild badly eroded or corroded surfaces and are proven to give a effective protection from any further surface degradation.

With a range of solvent free epoxy and epoxy novolac repair materials to choose from we can repair heat exchangers operating from 20-130°C (68-260°F).

Solvent free epoxy systems

No shrinkage

Ceramic enhanced erosion protection

Rebuild and resurface worn and damaged surfaces

Proven protection in the marine industry

Capable of resisting 130°C immersion temperatures

Rudder Repair and Resurfacing

Erosion of the leading edge of the rudder is a common problem on board vessels. Repairs used to be performed by welding metal plates over the badly corroded areas to prevent any further structural loss.

By using Resimac ceramic enhanced coatings the need for hot works can be eradicated, while still being able to restore any structural loss and bring the surface of the rudder to its original specifications.

Resimac materials have been used worldwide and repairs using our products have been overseen by many of the classification societies.

Our products have a proven track record of giving up to 5 years erosion and corrosion protection in this aggressive operating environment

Solvent free epoxy repair system

Approved by major ship operators

Simple and easy to use products

Proven erosion resistance

Eradicates the need for hot works

Long term protection of expensive assets



Products include—

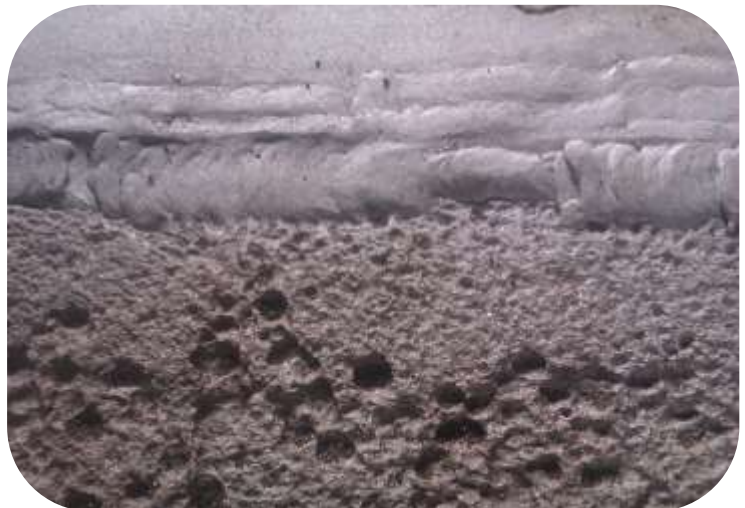
201 Ceramic Repair Paste—2 component solvent free epoxy paste

202 Ceramic Repair Fluid— 2 component solvent free brushable epoxy fluid for extreme wear and abrasion

Bow Thruster Repair and Lining

Bimetallic corrosion can be caused around the seating of the stainless steel bow thruster liner onto the mild steel vessel structure. Also the extreme operating environment caused by the turbulent flow of sea water through the tunnel can strip standard epoxy and polyurethane based coatings from the surface.

Resimac ceramic enhanced coatings can withstand such extreme operating environments and enable ship engineers to rectify existing erosion and corrosion issues in the bow thruster tunnel.



Solvent free epoxy system

Proven protection

Seamless finish

Superior abrasion resistance

Protects from bimetallic corrosion

Reduces downtime of expensive assets and equipment



Products include—

201 Ceramic Repair Paste—2 component solvent free epoxy paste

202 Ceramic Repair Fluid— 2 component solvent free brushable epoxy fluid for extreme wear and abrasion

Anti-Slip Deck Coatings

Our anti slip deck coating system has been proven over the past 7 years to give long lasting protection to car carrier, ferry and accommodation decks.

The coating system has been designed to flex with the steel plate surface eradicating issues associated with standard epoxy based deck coating systems and incorporates a range of aluminium oxide aggregates.

Once cured the system can withstand continuous daily use by traffic up to 65 tonnes in weight.

Flexible deck coating system

Proven to withstand up to 65 ton vehicles

Up to 10 year design life

Easy to apply

Return to service within 24 hours

Products include—

507 DWPU—a 2 component solvent free polyurethane coating incorporating coarse aluminium oxide aggregate for improved wear and abrasion resistance



Flange Face Reforming and Flange Fitting Repairs

Flanges and Mating surfaces on pipes, pumps and valves can become distorted and scored through repeated dismantling for maintenance, cleaning and gasket replacement. Many problems that arise from the failure of gaskets in flange faces can be contributed to the poor condition and uneven surface of the damaged flange face. This problem can allow leakage in-between the gasket and the flange face, causing product loss that in turn means financial loss as well as eventual gasket failure and costly replacement. These problems can be solved quickly and effectively by using Resimac Metal Repair Products



Solvent free epoxy systems

High strength engineering grades

Fully machineable once cured

No shrinkage

High mechanical strength

Surface tolerant grades available

Products include—

101 Metal Repair Paste—high strength epoxy engineering repair paste

106 Metal Repair Paste XF— fast curing epoxy repair paste for emergency repairs.

Metal and Mechanical Repairs



Solvent free epoxy repair systems

No shrinkage

Fast curing grades

Easy to apply

Rapid return to service

Fully machineable once cured



Resimac Metal Repair products are able to perform fast effective repairs to a wide range of process and mechanical equipment.

Our materials have been used to repair cracked engine blocks, rebuild cylinder liners, seal leaking tank seams, rebuild damaged pump shafts and scored hydraulic rams.

Available as fast cure, paste or fluid grades our metal repair products give marine engineers a wide range of solutions for onboard repair.

Products include—

101 Metal Repair Paste—high strength epoxy engineering repair paste

104 Metal Repair Fluid XF—fast curing surface tolerant epoxy repair fluid

106 Metal Repair Paste XF— fast curing epoxy repair paste for emergency repairs.

Heat and Thermal Protection

Protecting marine engineers and ship crews from hot surfaces is a major issue on board vessels. Resimac has developed an innovative range of liquid insulation coatings that can be applied to hot surfaces.

The Resimac range of thermal barrier coatings are proven to reduce hot surface touch temperatures to under the health and safety guideline temperature of 55°C. The flexibility of our range allows marine engineers to coat live hot surfaces up to 120°C. Alternatively our products can be applied to equipment and pipe-work that is off line and once cured can resist temperatures up to 250°C.



Solvent free epoxy or silicon systems

Can be applied to hot surfaces 120°C

Once cured can resist up to 250°C

Reduces surface touch temperature to below 55°C

Simple to mix and apply

Applied at thicknesses up to 8mm

Products include—

560 Thermal Barrier—2 component high build solvent free epoxy coating to be applied to equipment that is offline. Once cured will reduce surface touch temperatures from 140°C to below 55°C.

561 Thermal Barrier- 2 component high build solvent free epoxy coating to be applied to hot surfaces. Once cured will reduce surface touch temperatures from 140°C to below 55°C.

563 Thermal Barrier—2 component high build solvent free silicon coating to be applied to equipment that is offline. Once cured will reduce surface touch temperatures from 250°C to below 55°C

Underwater Coatings and Repair Materials

Resimac underwater coatings and repair materials have been used to coat or seal dock gates, structural steel and jetty pilings. Our materials can be applied to hand prepared or hydro-blasted surfaces and are proven to rebuild, resurface and protect metallic or concrete structures in continuous salt water immersion.

Our product range includes a rapid setting metal repair paste that can seal or rebuild surfaces in minutes. Our underwater high build coating has been designed to be applied in a single coat using an applicator tool or rotating brush head.

Rapid curing grades available

Apply to hand prep or hydro-blasted surfaces

Proven to give long lasting protection to metal or concrete structures

Easy to mix and apply

Can be applied by hand or by dispensing machine

Products include—

106 Metal Repair Paste XF— fast curing epoxy repair paste for underwater repairs.

208 Ceramic UW— 2 component high build solvent free epoxy capable of 1mm film thickness in a single coat



Resimac Technical Support and Expertise



Formed in 2009 and based in the North of England, Resimac manufactures a wide range of solvent free epoxy and polyurethane coatings and engineering materials for the Marine, Chemical, Power, Oil and Gas Industries.



Our work force has over 120 years experience in the coatings industry and we are able to offer expert technical advice onsite or online 24 hours a day, 7 days a week.



Contact us direct by email, facebook, telephone or by visiting our website.

Web: www.resimacsolutions.com

Tel: +44 (0) 1423 325073

Email: info@resimac.co.uk

Facebook: www.facebook.com/resimac



With over 50 contractors worldwide we are able to offer fast and effective solutions in many of the worlds busiest ports while maintaining local relationships with many of the major shipyards and ship operators.



Resimac Limited, Unit 11, Poplars Industrial Estate, Wetherby Road, Boroughbridge,

YO51 9HS, North Yorkshire, United Kingdom

Tel: +44 (0) 1423 325073

Web: www.resimacsolutions.com

Email: info@resimac.co.uk
